

TERRITORY

MURILO

Adobe Firefly

A dense city with a dried river crossing the city

Content Type: Photo

Visual Intensity: 4/8

Negative Prompt: NA

Aperture: f/8

Shutter speed: 1/2000s

Field of view: 80mm



Cities of the future
Murilo Calegari and Adobe Firefly
Dec 04th, 2023

Adobe Firefly

A dense city with a dried river crossing it

Content Type: Photo

Visual Intensity: 4/8

Negative Prompt: NA

Aperture: f/8

Shutter speed: 1/2000s

Field of view: 80mm



Cities of the future
Murilo Calegari and Adobe Firefly
Dec 04th, 2023

Adobe Firefly

A futuristic super dense city with a completely dry river crossing it. Drought. Lots of buildings. Multiple skyscrapers. Little vegetation. Flying cars. Futuristic Cyberpunk style

Content Type: Photo

Visual Intensity: 4/8

Negative Prompt: NA

Aperture: f/8

Shutter speed: 1/2000s

Field of view: 80mm



Cities of the future
Murilo Calegari and Adobe Firefly
Dec 04th, 2023

Adobe Firefly

Flooded suburban neighborhood.

Content Type: Photo

Visual Intensity: 4/8

Negative Prompt: NA

Aperture: f/2.8

Shutter speed: 1/2000s

Field of view: 14mm



Cities of the future
Murilo Calegari and Adobe Firefly
Dec 04th, 2023

Adobe Firefly

Flooded suburban neighborhood with boats going through the water.

Content Type: Photo

Visual Intensity: 4/8

Negative Prompt: NA

Aperture: f/2.8

Shutter speed: 1/2000s

Field of view: 14mm



Cities of the future
Murilo Calegari and Adobe Firefly
Dec 04th, 2023

Adobe Firefly

New york city but in the middle of the desert.

Content Type: Photo

Visual Intensity: 4/8

Negative Prompt: NA

Aperture: f/8

Shutter speed: 1/2000s

Field of view: 80mm



Cities of the future
Murilo Calegari and Adobe Firefly
Dec 04th, 2023

Adobe Firefly

paris with river dry seine river. no water. extreme drought. Eiffel tower in the background

Content Type: Photo

Visual Intensity: 4/8

Negative Prompt: NA

Aperture: f/8

Shutter speed: 1/2000s

Field of view: 20mm



Cities of the future
Murilo Calegari and Adobe Firefly
Dec 04th, 2023

Adobe Firefly

London with river dry river thames. no water. drought. big ben in the background

Content Type: Photo

Visual Intensity: 4/8

Negative Prompt: NA

Aperture: f/8

Shutter speed: 1/2000s

Field of view: 20mm



Cities of the future
Murilo Calegari and Adobe Firefly
Dec 04th, 2023

Adobe Firefly

rio de janeiro, brazil, going through extreme drought

Content Type: Photo

Visual Intensity: 4/8

Negative Prompt: NA

Aperture: f/8

Shutter speed: 1/2000s

Field of view: 80mm



Cities of the future
Murilo Calegari and Adobe Firefly
Dec 04th, 2023

Adobe Firefly

rio de janeiro, brazil, going through extreme drought. no green areas

Content Type: Photo

Visual Intensity: 4/8

Negative Prompt: NA

Aperture: f/8

Shutter speed: 1/2000s

Field of view: 80mm



Cities of the future
Murilo Calegari and Adobe Firefly
Dec 04th, 2023

NANPU

getimg.ai

Sampler: DPM-Solver++, AI model: Realistic Vision v5.1

Prompt: dystopian doomsday ruined city with piled damaged reinforced concrete structure, grabage everywhere, collapsed city building and skyscrapers, very dirty puddles, dark sky full of clouds, high quality

image

Negative Prompt: Disfigured, cartoon, blurry

Hyper settings: strength - 0.9, guidance scale - 9, steps - 25

This first scene introduces a state of an dystopian urban landscape, where everything seems ruined and a floating architect supported by scyscrapers implicates that this would be in the future setting. There is no sense of any life, only stacked steel structures and garbage floating on dirty water. The heavy thick covering cloud and the sunset lighting creates an oppressive apocalyptic atmosphere, where humanity has disappeared, leaving only cold and messy piles of waste within their territory.



Sequence Image 1
Nanpu Chen with getimg.ai
12/1/2023

getimg.ai

Sampler: DPM-Solver++, AI model: Realistic Vision v5.1

Prompt: high-tech but severely damaged and not-working weapons with rusty shells standing in a dystopia doomsday ruined city, after a severe nuclear war, corpse lying everywhere, dark sky full of clouds, high quality

Negative prompt: Disfigured, cartoon, blurry

Hyper-Settings: guidance scale - 9, steps - 25

Continuing the apocalyptic setting in the previous picture, this image showcases a lifeless sense of ruining dilapidation. On the waste-covering ground e lay two rusty weapons that were left unused, together with the burning fire in distance seems to implicate that war is what leads to the current lifeless and wreckage situation.



Sequence Image 2
Nanpu Chen with getimg.ai
12/1/2023

getimg.ai

Sampler: DPM-Solver++, AI model: Realistic Vision v5.1

Prompt: Ruins of a very heavily polluted farm by waste materials from industrial factories, vast but depressed landscape, strange plantations due to nuclear leakage with withered leaves and branches, dark sky full of clouds with extreme lack of direct sunlight, high quality

Negative Prompt: Disfigured, cartoon, blurry

Hyper-Settings: strength - 0.9, guidance scale - 9, steps - 25

The rural areas are no better than the urban. The originally plantations were destroyed and scattered in disarray, and constructions faraway remain only fragments and ruins. Plants crawling on and entangling the buildings indicates that this place has been neglected for a long time. Human beings seem to have suddenly disappeared, allowing plants to grow rampantly in their territories.



Sequence Image 3
Nanpu Chen with getimg.ai
12/1/2023

getimg.ai

Sampler: DPM-Solver++, AI model: Realistic Vision v5.1

Prompt: sea with grey waters and plastic wastes and dead marine creatures floating on top, seashore filled with garbage, doomsday style, after heavy bombing, ebb tide, deep grey sky full of clouds, high quality

Negative prompt: Disfigured, cartoon, blurry

Hyper-Settings: guidance scale - 9, steps - 25

The marine is even more unbearable. On the receding seashore piles all sorts of marine corps and artificial wastes. Ships from afar were casually abandoned and left unattended in the nearshore waters, but still no sense of humanity could be seen. Human civilization tramples on their own territory so recklessly that the environment is no longer able to self-purify after their dissipation.



Sequence Image 4
Nanpu Chen with getimg.ai
12/1/2023

getimg.ai

Sampler: DPM-Solver++, AI model: Realistic Vision v5.1

Prompt: destroyed forest with scattered branches anywhere and poor soil, a few fire still burning, vast landscape with clear horizons, sparse and thin trees with bare branches and trunks, deep grey sky full of clouds, high quality

image

Negative prompt: Disfigured, cartoon, blurry

Hyper-Settings: strength - 0.8, guidance scale - 9, steps - 25

Even the forest presents a dilapidated scene. Bare branches stretch out from poor earth, looking lifeless and helpless. As one of the most bio-diverse ecosystems, the loss of forest habitat is horrifying, and the distant fire indicates that such destruction is still ongoing.



Sequence Image 5
Nanpu Chen with getimg.ai
12/1/2023

getimg.ai

Sampler: DPM-Solver++, AI model: Realistic Vision v5.1

Prompt: destroyed nuclear plants with leaking nuclear wastewater pouring into sea, toxic technotrashes scattering on the land and on the sea surface, polluted dusky air and sky, from a high altitude perspective towards the land, deep grey sky full of clouds, high quality

image

Negative Prompt: Disfigured, cartoon, blurry, bombing

Hyper-Settings: strength - 0.8, guidance scale - 9, steps - 25

Energy plants are still operating, continuing to pollute heavy smokes into the sky. Apart from land and water, human beings constantly tramples on their own aerial territories as well. The rising wall of smoke looks like stone tombs that the human race built for themselves.



Sequence Image 6
Nanpu Chen with getimg.ai
12/1/2023

getimg.ai

Sampler: DPM-Solver++, AI model: Realistic Vision v5.1

Prompt: wasted and damaged research center with buildings, toxic technotrashes scattering on the ground, polluted dusky air and sky, from a high altitude perspective, deep grey sky full of heavy thick clouds, high quality

image

Negative prompt: Disfigured, cartoon, blurry

Hyper-Settings: strength - 0.9, guidance scale - 9, steps - 25

Human research centers lies shatterly on a vast land, and fragments of their walls scattered sporadically on the ground with no clue of repairment. Such buildings, which used to symbolize the advanced level of human civilization and their most advanced acheivements, now lies in ruins.



Sequence Image 7
Nanpu Chen with getimg.ai
12/1/2023

getimg.ai

Sampler: DPM-Solver++, AI model: Realistic Vision v5.1

Prompt: lost and unused spaceport, kennedy space center, desert in dusk, deep grey sky full of heavy thick clouds under dusk setting, high quality

image

Negative prompt: Disfigured, cartoon, blurry

Hyper-Settings: strength - 0.9, guidance scale - 9, steps - 25

This image functions as a “turning point” for the narration of the sequence, which gives a clue of the possibility of where human beings have went. The rocket figure, well known for sending objects into outer space, lays the groundwork for the content of the following two images. It gives the audience hope that humans could have sent themselves into the universe, searching for a livable new territory.



Sequence Image 8
Nanpu Chen with getimg.ai
12/1/2023

getimg.ai

Sampler: DPM-Solver++, AI model: Realistic Vision v5.1

Prompt: A massive high-tech spacecraft carrying humans to other planets flying away from Earth with Earth in the background, stars shining, high quality

image

Negative prompt: Disfigured, cartoon, blurry

Hyper-Settings: strength - 0.9, guidance scale - 9, steps - 25

The artistic style shifts in sudden from the depressing dilapidation to this sense of high-technology and hopefulness. Operating spacecrafts navigates in the outer space, leaving the planet Earth behind. Human beings decided to leave the planet that have nurtured them for a new habitat livable to live in. The spacecraft serves as their temporary territory and carries their hope towards the future.



Sequence Image 9
Nanpu Chen with getimg.ai
12/1/2023

getimg.ai

Sampler: DPM-Solver++, AI model: Realistic Vision v5.1

Prompt: Mars colony with high-tech futuristic buildings, planet Earth far away in vision, high quality

image

Negative prompt: Disfigured, cartoon, blurry, rockets

Hyper-Settings: strength - 0.9, guidance scale - 9, steps - 25

Shown in the image is new high-tech human territory located on other celestial bodies. Being well-designed, the new territory consists of futuristic architectures which are, in comparison with previous images, lively and full of hope. Despite no living creatures visible in the image, the light blue glows on the buildings all showcases active human activities. The huge floating sphere structure and the human gathering place of circular planning brings a sense of order, in sharp contrast to the chaotic scenes in previous images. Also, the environment seems clean as the human territory seems to have harmonious coexistence with surrounding water bodies.



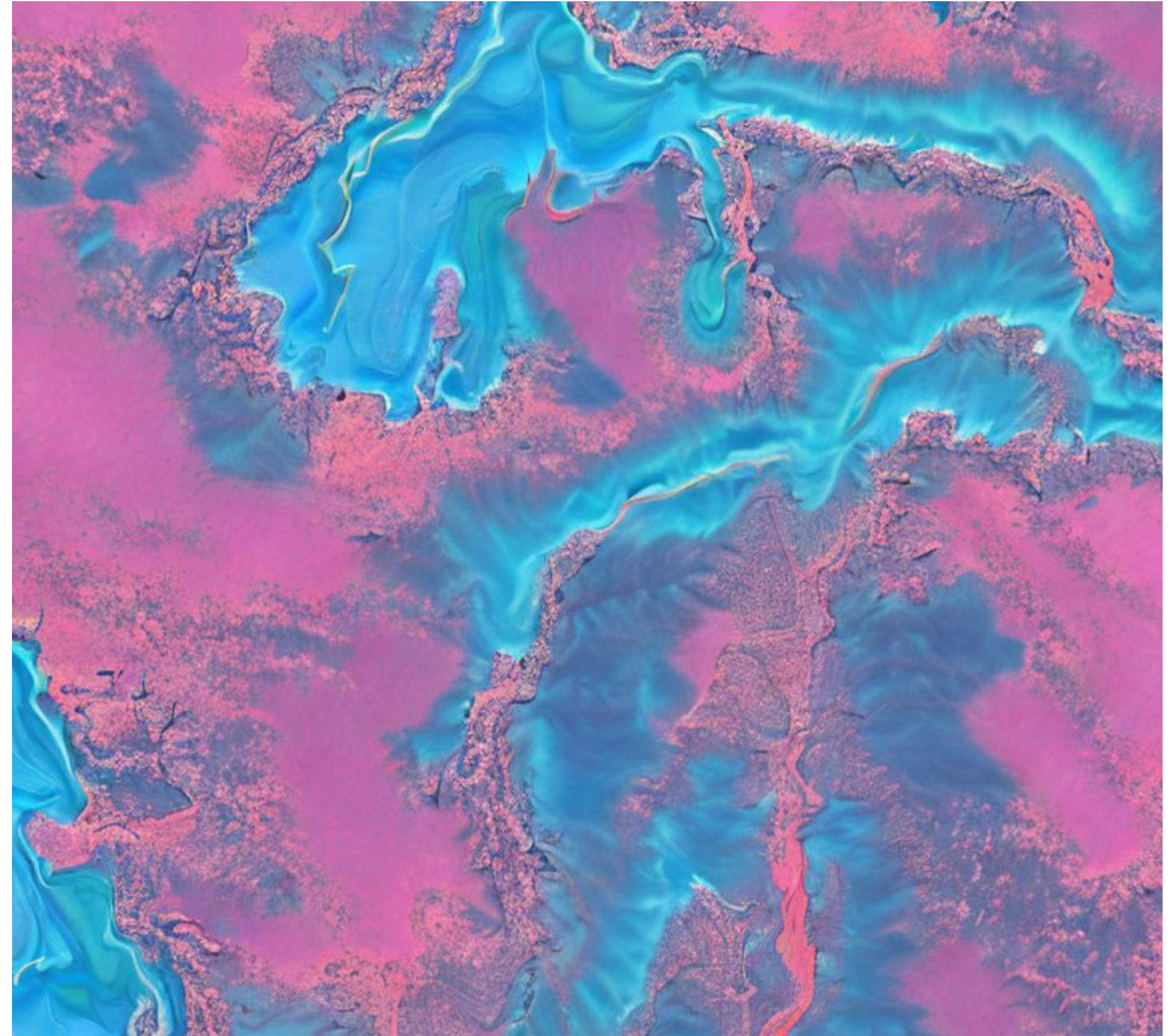
Sequence Image 10
Nanpu Chen with getimg.ai
12/1/2023

WILLLA

Stable Diffusion 2.1

Prompt language: topography, blue, thin, land map, electric pink lakes, trees like clouds

Hyper-Settings: N/A



Willa Gilbert-Goldstein
11/30/23

Stable Diffusion 2.1

Prompt language: blue, thin, land map, electric pink lakes, trees like clouds, drone view, glaciers, icy

Hyper-Settings: N/A



Willa Gilbert-Goldstein
11/30/23

Stable Diffusion 2.1

Prompt language: blue, thin, land map, electric pink lakes, trees like clouds, drone view

Hyper-Settings: N/A



Willa Gilbert-Goldstein
11/30/23

Stable Diffusion 2.1

Prompt language: blue, thin, land map, electric pink lakes, trees like clouds, drone view, glaciers, icy, country roads intersecting

Hyper-Settings: N/A

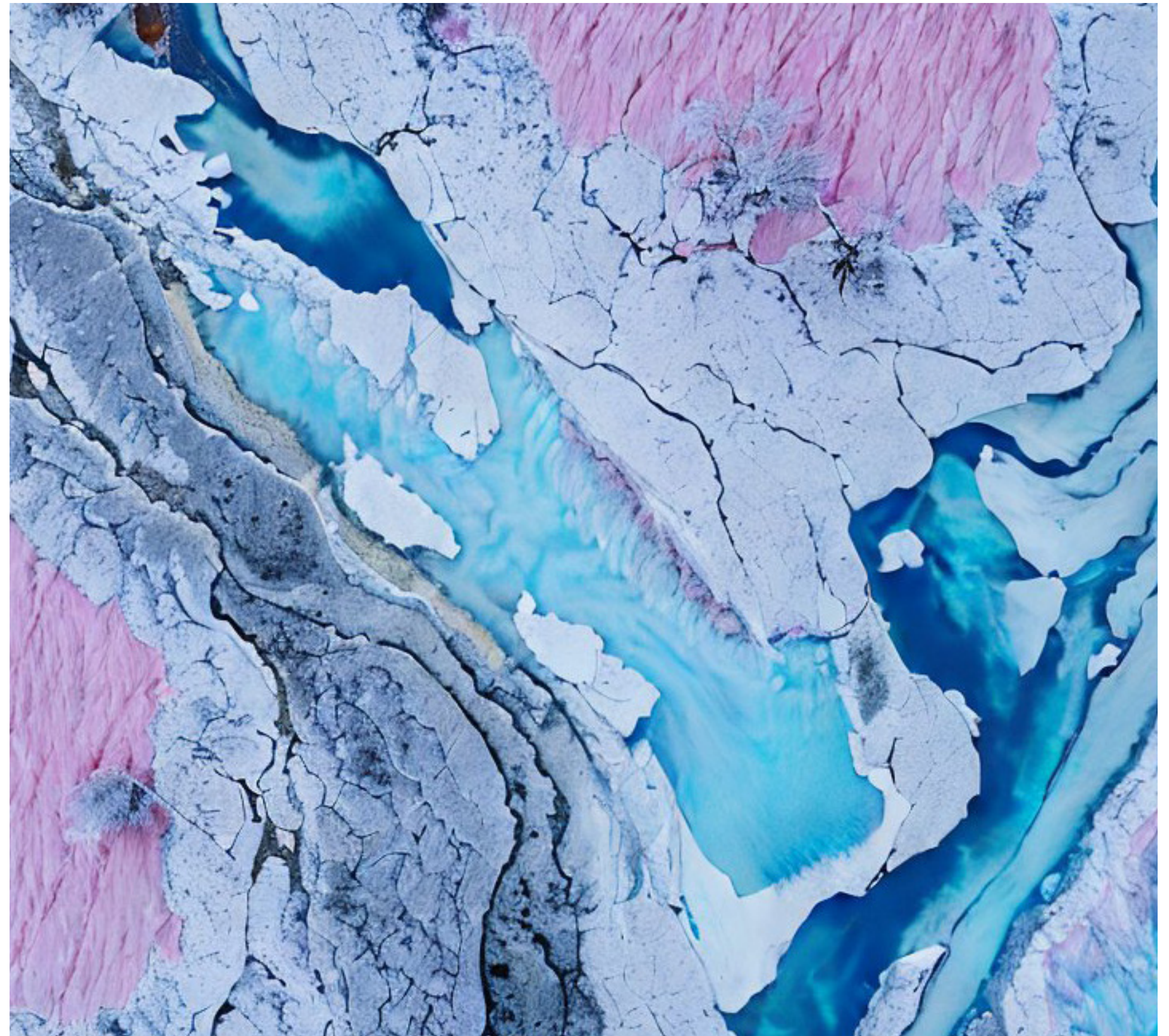


Willa Gilbert-Goldstein
11/30/23

Stable Diffusion 2.1

Prompt language: blue, land map, rainbow lakes, trees, drone view, glaciers, icy, rushing ocean, soft pink

Hyper-Settings: N/A



Willa Gilbert-Goldstein
11/30/23

Stable Diffusion 2.1

Prompt language: blue, land map, rainbow lakes, trees, drone view, glaciers, icy, rushing ocean, soft pink, sunset

Hyper-Settings: N/A

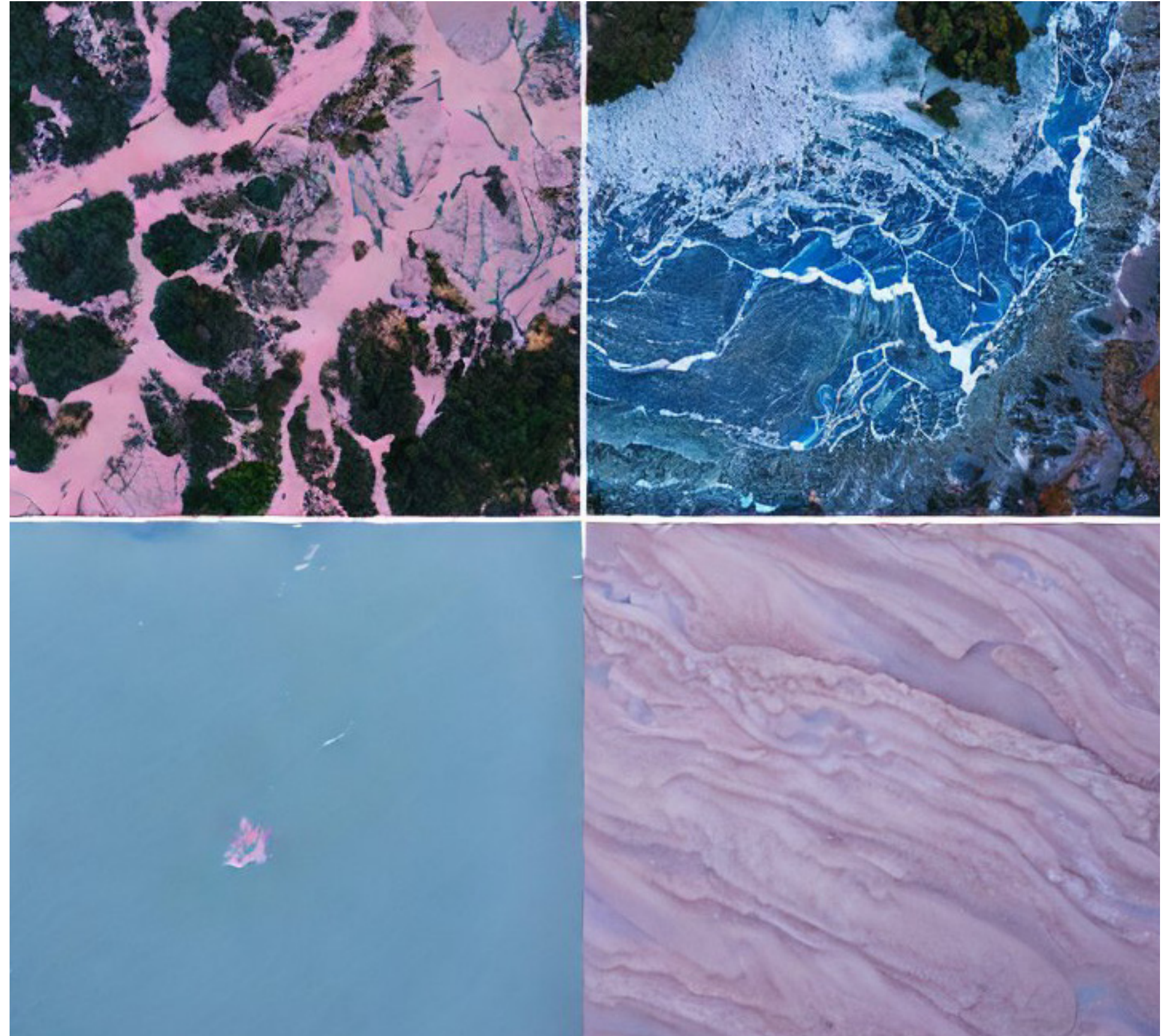


Willa Gilbert-Goldstein
11/30/23

Stable Diffusion 2.1

Prompt language: blue, land map, rainbow lakes, trees, drone view, glaciers, icy, rushing ocean, soft pink, dusk

Hyper-Settings: N/A



Willa Gilbert-Goldstein
11/30/23

Stable Diffusion 2.1

Prompt language: norway darkness, wilderness, blue, land map, rainbow lakes, trees, drone view, glaciers, icy, rushing ocean, soft pink, dusk

Hyper-Settings: N/A



Willa Gilbert-Goldstein
11/30/23

Stable Diffusion 2.1

Prompt language: norway darkness, wilderness, blue, land map, rainbow lakes, trees, drone view, glaciers, icy, rushing ocean, soft pink, dusk, shadows

Hyper-Settings: N/A



Willa Gilbert-Goldstein
11/30/23

Stable Diffusion 2.1

Prompt language: alien planet, wilderness, blue, land map, rainbow lakes, trees, drone view, glaciers, icy, rushing ocean, soft pink, dusk, shadows

Hyper-Settings: N/A



Willa Gilbert-Goldstein
11/30/23

HAYLEY

Adobe Firefly 2

Prompt language

Earth from space, dark background

Hyper-Settings

Style: layered paper



Global Scale
Haley Wixom
December 5, 2023

Adobe Firefly 2

Prompt language
Traditional map of the United States

Hyper-Settings
Style: antique photo



National Scale
Haley Wixom
December 5, 2023

Adobe Firefly 2

Prompt language
Midatlantic region

Hyper-Settings
NA



Regional Scale
Haley Wixom
December 5, 2023

Adobe Firefly 2

Prompt language
Aerial view of north carolina

Hyper-Settings
NA



State Scale
Haley Wixom
December 5, 2023

Adobe Firefly 2

Prompt language
Durham skyline

Hyper-Settings
Style: watercolor



Local Scale
Haley Wixom
December 5, 2023

Adobe Firefly 2

Prompt language
Duke University campus from window view

Hyper-Settings
NA



Community Scale
Haley Wixom
December 5, 2023

Adobe Firefly 2

Prompt language

Picnicking in the duke gardens with friends

Hyper-Settings

Style: chaotic



Location Scale
Haley Wixom
December 5, 2023

Adobe Firefly 2

Prompt language

taking a bite of a sandwich at picnic, zoom on mouth

Hyper-Settings

Style: macrophotography



Moment Scale
Haley Wixom
December 5, 2023

Adobe Firefly 2

Prompt language

Overhead view of picnic basket with food in the park, detailed

Hyper-Settings

Style: pop art



Memory Scale
Haley Wixom
December 5, 2023

Adobe Firefly 2

Prompt language

Ants taking fruit from picnic, red checkered picnic blanket, in the park, from above, unseen people to the side

Hyper-Settings

Style: fantasy



Unnoticed Scale
Haley Wixom
December 5, 2023

NICOLE

Adobe Firefly 2024

Prompt language: "one taller plant blocking beam of light from slightly smaller plant below it, competing"

Hyper-Settings: content type: image; strength: normal



Light Territory
Nicole (Nikki) Quinn
12/01/2023

Adobe Firefly 2024

Prompt language: "two ants fighting over a single leaf on top of ant hole"

Hyper-Settings: content type: image; strength: normal



Resource Territory
Nicole (Nikki) Quinn
12/01/2023

Adobe Firefly 2024

Prompt language: "two wolves fighting against each other, one wolf snarling at the other, violent, dead deer"

Hyper-Settings: content type: image; strength: normal



Prey Territory
Nicole (Nikki) Quinn
12/01/2023

Adobe Firefly 2024

Prompt language: "hawk attacking crow's nest in forest treetop"

Hyper-Settings: content type: image; strength: normal



Young Territory
Nicole (Nikki) Quinn
12/01/2023

Adobe Firefly 2024

Prompt language: "two stags fighting over a female deer in forest"

Hyper-Settings: content type: image; strength: normal



Defending Territory
Artist: (Niki) Quinn
May 01/2023

Adobe Firefly 2024

Prompt language: "bobcats in far distance crossing from one side of hiking trail to other, in forest; no human"

Hyper-Settings: content type: image; strength: normal



Trail Territory
Nicole (Nikki) Quinn
12/01/2023

Adobe Firefly 2024

Prompt language: "Family sitting at picnic table in forest in hiking clothes"

Hyper-Settings: content type: image; strength: normal



Clearing Territory
Nicole (Nikki) Quinn
12/01/2023

Adobe Firefly 2024

Prompt language: "part of forest just cut down stumps, pile of logs off in distance"

Hyper-Settings: content type: image; strength: normal



Spacial Territory
Nicole (Nikki) Quinn
12/01/2023

Adobe Firefly 2024

Prompt language: "cute neighborhood of houses and street in the forest"

Hyper-Settings: content type: image; strength: normal



Habitat Territory
Nicole (Nikki) Quinn
12/01/2023

Adobe Firefly 2024

Prompt language: "Mountain town main street with storefronts inside forest, deer walking in middle of road"

Hyper-Settings: content type: image; strength: normal



Forest Territory
Nicole (Nikki) Quinn
12/01/2023

JAYLA

Adobe Firefly

Prompt language

A serene forest teeming with life. Animals roam freely amidst towering trees, vibrant foliage, and a crystal-clear stream. The scene radiates untouched natural beauty.

Hyper-Settings

Default

Artist Reflection

This concept was chosen to address critical humanist issues embedded within territories and landscapes. The sequence of images was used to visually communicate the evolving conflict between pristine nature and encroaching urbanization, highlighting issues like habitat destruction, wildlife displacement, and the clash between human development and natural ecosystems. The politics of landscape and habitat are illustrated through the stark contrast between untouched wilderness and expanding urban areas, exploring the ethical implications of human intervention in geographical spaces. By showcasing this narrative through a sequence of images, it aims to engage with the discourse on environmental ethics, societal values, and the consequences of human actions on the natural world. Untouched by human hands, the lush forest stands as an oasis of life. Wildlife thrives



Pristine Wilderness

Jayla Eckhoff

12/4/23

Adobe Firefly

Prompt language

The distant skyline of a city emerges on the horizon, hinting at encroaching human civilization. However, the wilderness remains untouched and abundant for now.

Hyper-Settings

Default

Artist Reflection

On the horizon, a distant cityscape signals the encroachment of civilization, yet the wilderness remains untouched. The contrast highlights the imminent clash between nature's purity and human expansion.



Human Presence Emerges

Jayla Eckhoff

12/4/23

Adobe Firefly

Prompt language

The cityscape looms closer, marking the beginning of human intrusion. A construction site or industrial zone disrupts the natural tranquility, hinting at the impending transformation of the landscape.

Hyper-Settings

Default

Artist Reflection

The edges of the forest bear the scars of human intervention. Felled trees and encroaching concrete mark the relentless advance of urban development into the once-virgin landscape.



Urbanization Creeps In

Jayla Eckhoff

12/4/23

Adobe Firefly

Prompt language

The edges of the forest start to show signs of human intervention. Felled trees, construction fences, and machinery represent the encroaching urban sprawl, disrupting the habitat.

Hyper-Settings

Default

Artist Reflection

The first signs of human intrusion disrupt the wilderness—a burgeoning construction site interrupts the once-unbroken expanse, hinting at the impending transformation.



Wilderness Under Threat

Jayla Eckhoff

12/4/23

Adobe Firefly

Prompt language

Animals, startled and displaced, attempt to navigate through the altering landscape. Some are seen fleeing from construction zones or hesitantly approaching the outskirts of the encroaching city.

Hyper-Settings

Default

Artist Reflection

Startled animals flee as their habitat diminishes. Displaced and dis-oriented, they navigate through a changing environment, struggling to adapt amidst encroaching human structures.



Wildlife Displacement

Jayla Eckhoff

12/4/23

Adobe Firefly

Prompt language

A powerful visual of conflict between humans and wildlife—a highway cutting through the forest, with signs of accidents or clashes between vehicles and animals, portraying the collision of these two worlds.

Hyper-Settings

Default

Artist Reflection

The collision between worlds is vividly depicted—a highway slices through the forest, revealing the fatal encounters between wildlife and vehicles, emblematic of the struggle between natural habitats and human infrastructure.



Clash of Realms

Jayla Eckhoff

12/4/23

Adobe Firefly

Prompt language

Remaining fragments of greenery amidst concrete expanses become the last refuges for surviving animals. These isolated patches struggle to sustain life, surrounded by the overwhelming urban landscape. Hyper-Settings

Default

Artist Reflection

Fragments of greenery stand as shrinking sanctuaries amidst urban sprawl. These isolated havens struggle to sustain life amid a sea of concrete, offering diminishing refuge for surviving wildlife.



Isolated Wildlife Pockets

Jayla Eckhoff

12/4/23

Adobe Firefly

Prompt language

The once-thriving forest is now a mere shadow of its former self. Empty landscapes scarred by urban development dominate, with little to no signs of wildlife remaining.

Hyper-Settings

Default

Artist Reflection

The once-vibrant forest lies in ruin—a desolate expanse scarred by human expansion. Nature's vitality has succumbed to urban dominance, leaving behind empty landscapes devoid of its former inhabitants.



Desolation Sets In

Jayla Eckhoff

12/4/23

Adobe Firefly

Prompt language

A solitary animal, perhaps an emblematic species of the region, stands amidst the desolation, a symbol of resilience and survival against the overwhelming human impact.

Hyper-Settings

Default

Artist Reflection

Amidst the devastation, a lone animal stands as a resilient symbol of the region's former glory. Its solitary presence represents the struggle for survival amidst overwhelming human impact.



Lone Survivor

Jayla Eckhoff

12/4/23

Adobe Firefly

Prompt language

Barren isolated city, empty, greenery, animals overfun the once full city

Hyper-Settings

Default

Artist Reflection

An empty cityscape, devoid of human presence, is slowly reclaimed by nature. Greenery flourishes, and animals once again roam freely, signaling the beginning of a new, balanced coexistence between humanity and the environment.



Starting Over

Jayla Eckhoff

12/4/23

ROBERT

Adobe Firefly 2

Prompt: Utopia on Mars, billionaire statue inside the city, city buildings in the foreground, rovers in the distance

Settings:

Portrait 3:4

Visual intensity: 75%

Style strength: 50%

Effects: Popular

Color and Tone: None

Lighting: None

Composition: None

Advanced settings: None



Mars Colony
Robert Kaptur
12/5/2023

Adobe Firefly 2

Prompt: Aquaponic farm on Mars, farmers working inside a greenhouse, Martian landscape

Settings:

Portrait 3:4

Visual intensity: 75%

Style strength: 50%

Effects: Popular

Color and Tone: None

Lighting: None

Composition: None

Advanced settings: None



Mars Aquaponic Farm
Robert Kaptur
12/5/2023

Adobe Firefly 2

Prompt: City on the moon, Earth in the background

Settings:

Portrait 3:4

Visual intensity: 75%

Style strength: 50%

Effects: Popular

Color and Tone: None

Lighting: None

Composition: None

Advanced settings: None



Moon Colony
Robert Kaptur
12/5/2023

Adobe Firefly 2

Prompt: . Mining town, quarry on the moon, astronaut working in the distance, 3d rendering

Settings:

Portrait 3:4

Visual intensity: 75%

Style strength: 50%

Effects: Popular

Color and Tone: None

Lighting: None

Composition: None

Advanced settings: None



Moon Gold Mines
Robert Kaptur
12/5/2023

Adobe Firefly 2

Prompt: Space colony underwater, below the ice crust, space elevator reaching the ice, rocky seabed, 3D rendering

Settings:

Portrait 3:4

Visual intensity: 75%

Style strength: 50%

Effects: Popular

Color and Tone: None

Lighting: None

Composition: None

Advanced settings: None



Titan Colony
Robert Kaptur
12/5/2023

Adobe Firefly 2

Prompt: international space station city, suspended in space, earth in the background

Settings:

Portrait 3:4

Visual intensity: 75%

Style strength: 50%

Effects: Popular

Color and Tone: None

Lighting: None

Composition: None

Advanced settings: None



International Space Arc
Robert Kaptur
12/5/2023

Adobe Firefly 2

Prompt: Dystopia, destroyed city, polluted air, cyberpunk

Settings:

Portrait 3:4

Visual intensity: 75%

Style strength: 50%

Effects: Popular

Color and Tone: None

Lighting: None

Composition: None

Advanced settings: None



Manhattan
Robert Kaptur
12/5/2023

Adobe Firefly 2

Prompt: destroyed farm, barren land, lifeless climate, global warming, cyberpunk, green fog

Settings:

Portrait 3:4

Visual intensity: 75%

Style strength: 50%

Effects: Popular

Color and Tone: None

Lighting: None

Composition: None

Advanced settings:

Negative prompts: city, buildings, grass



Countryside
Robert Kaptur
12/5/2023

Adobe Firefly 2

Prompt: Dystopian landfill, piles of trash, global warming, robots working, pollution

Settings:

Portrait 3:4

Visual intensity: 75%

Style strength: 50%

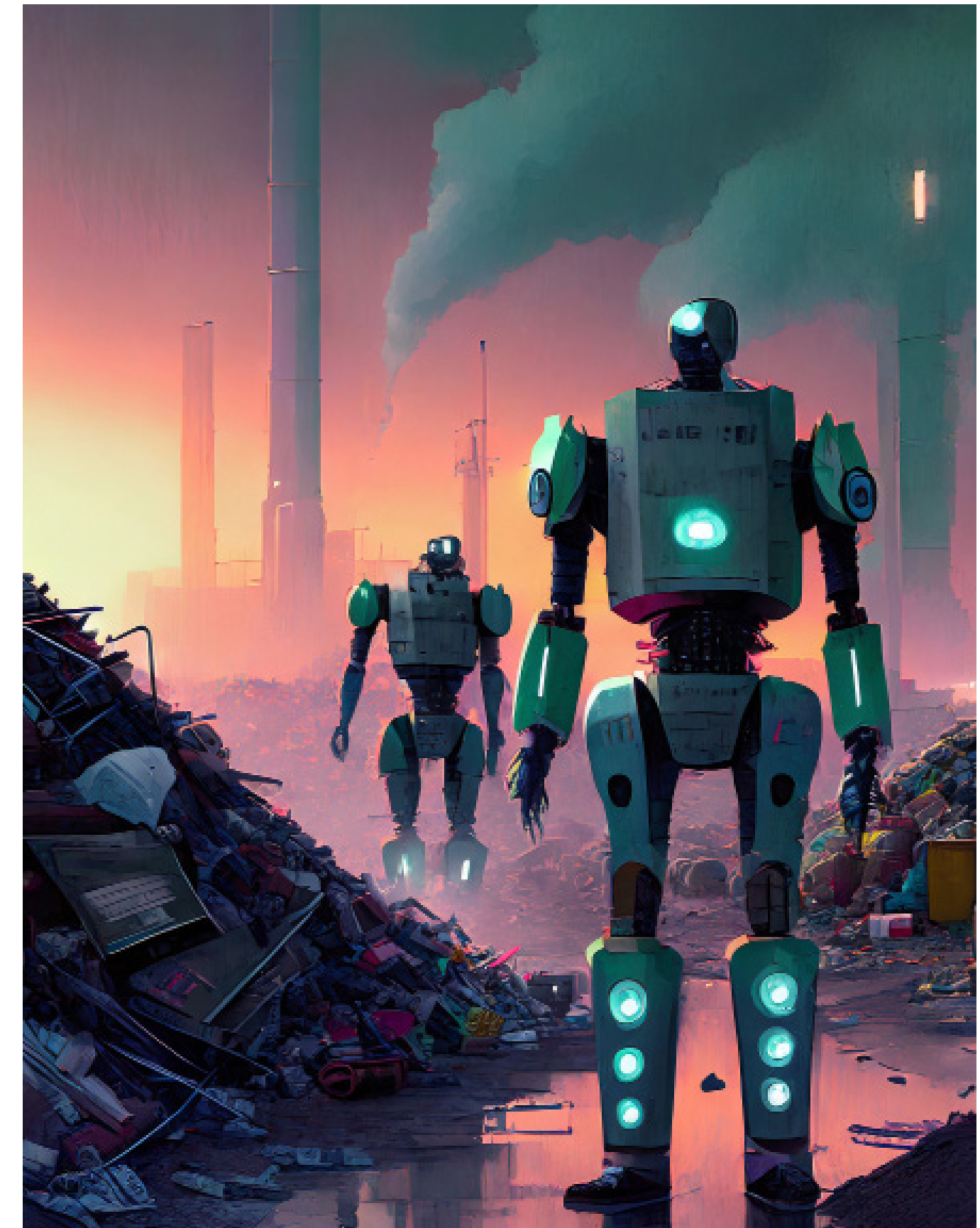
Effects: Popular

Color and Tone: None

Lighting: None

Composition: None

Advanced settings: None



The Great Landfill
Artist Name
Robert Kaptur
12/5/2023

Adobe Firefly 2

Prompt: 3D Hologram of the solar system in an office, moon, mars, pluto

Settings:

Portrait 3:4

Visual intensity: 75%

Style strength: 50%

Effects: Popular

Color and Tone: None

Lighting: None

Composition: None

Advanced settings: None



Solar Globe
Robert Kaptur
12/5/2023

JADYDYN

Adobe Photoshope 2024 Generative Fill

Prompt language:

- 1. Simple valley landscape with no depth of field, no signs of human life, overgrown**
- 2. Brighten sky**

Hyper-Settings: None



Landscape
Jadyn Cleary
5 December 2023

Adobe Photoshope 2024 Generative Fill

Prompt language:

- 1. Brighten sky**
- 2. Early human houses, simple, huts**
- 3. Remains of a campfire, ash, smoke, embers**
- 4. Debris from ancient tools, stone, sticks, straw**
- 5. Scattered parts from ancient hunting tools, arrow heads**

Hyper-Settings: None



Settlers
Jadyn Cleary
5 December 2023

Adobe Photoshope 2024 Generative Fill

Prompt language:

- 1. Brighten sky**
- 2. Row of tall crops**
- 3. Wild sheep roaming**

Hyper-Settings: None



Agriculture
Jadyn Cleary
5 December 2023

Adobe Photoshop 2024 Generative Fill

Prompt language:

- 1. Brighten sky**
- 2. Ground view of early civilization village**
- 3. Campfire, ash, smoke, embers**
- 4. Woven straw basket full of grain**
- 5. Many ancient clay bowls and pots, dirty**
- 6. Farm goat**
- 7. Large husky like dog**

Hyper-Settings: None



Village
Jadyn Cleary
5 December 2023

Adobe Photoshop 2024 Generative Fill

Prompt language:

- 1. Ground view of historical village with wooden and stone buildings**
- 2. Remove foliage**
- 3. Stone well**
- 4. Donkeys in a wooden stable**

Hyper-Settings: None



Town
Jadyn Cleary
5 December 2023

Adobe Photoshope 2024 Generative Fill

Prompt language:

1. Change sky
2. Ground view of city with buildings made of stone, no cars, door-ways
3. Add more buildings
4. Horse

Hyper-Settings: None



City
Jadyn Cleary
5 December 2023

Adobe Photoshope 2024 Generative Fill

Prompt language:

- 1. Brick apartment building**
- 2. Tall building**
- 3. Storefront**
- 4. City buildings, road**
- 5. Remove foliage**

Hyper-Settings: None



Adobe Photoshope 2024 Generative Fill

Prompt language:

- 1. On fire, smoke**
- 2. Broken**
- 3. Pothole**
- 4. Cracks**
- 5. Rubble, debris**
- 6. Wreckage**
- 7. Trash**
- 8. Puddle**
- 9. Vines growing**
- 10. Chipped wall**

Hyper-Settings: None



Turmoil
Jadyn Cleary
5 December 2023

Adobe Photoshope 2024 Generative Fill

Prompt language:

- 1. Broken concrete**
- 2. Gloomy sky**
- 3. Destroyed, rubble, broken**
- 4. Broken, rubble**
- 5. Broken window**
- 6. Dirty**
- 7. Chipped paint**
- 8. Deep cracks**

Hyper-Settings: None



Decay
Jadyn Cleary
5 December 2023

Adobe Photoshope 2024 Generative Fill

Prompt language:

Change sky

1. Trees
2. Grass
3. Pile of old brick rubble with foliage
4. Old broken patch of concrete with vines
5. Bit of a broken concrete path
6. Green grass and foliage
7. Foliage

Hyper-Settings: None



WILL